

THIS INSTRUMENT PREPARED BY  
 DAVID P. LINDLEY  
 OF  
**CAULFIELD and WHEELER, INC.**  
 SURVEYORS - ENGINEERS - PLANNERS  
 7301-A WEST PALMETTO PARK ROAD, SUITE 100A  
 BOCA RATON, FLORIDA 33433 - (561)392-1991  
 JANUARY- 2010

# PARCEL 32, P.U.D.

A PLANNED UNIT DEVELOPMENT  
 BEING A PLAT OF A PORTION OF THE NORTHEAST ONE-QUARTER OF  
 SECTION 29, TOWNSHIP 41 SOUTH, RANGE 43 EAST,  
 PALM BEACH COUNTY, FLORIDA

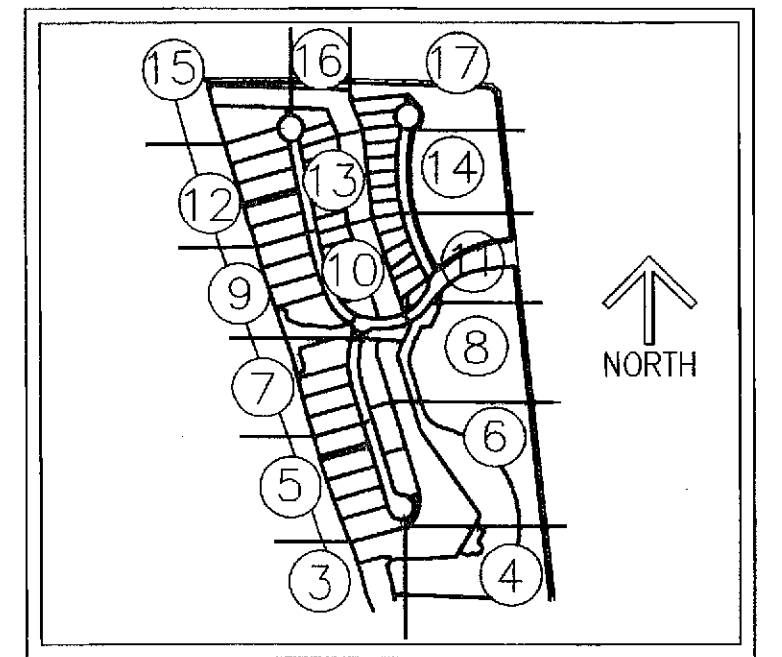
**86**

STATE OF FLORIDA  
 COUNTY OF PALM BEACH  
 THIS PLAT WAS FILED FOR  
 RECORD AT \_\_\_\_\_ M.  
 THIS \_\_\_\_\_ DAY OF \_\_\_\_\_  
 A.D. 20\_\_\_\_ AND DULY RECORDED  
 IN PLAT BOOK \_\_\_\_\_ ON  
 PAGES \_\_\_\_\_ AND \_\_\_\_\_

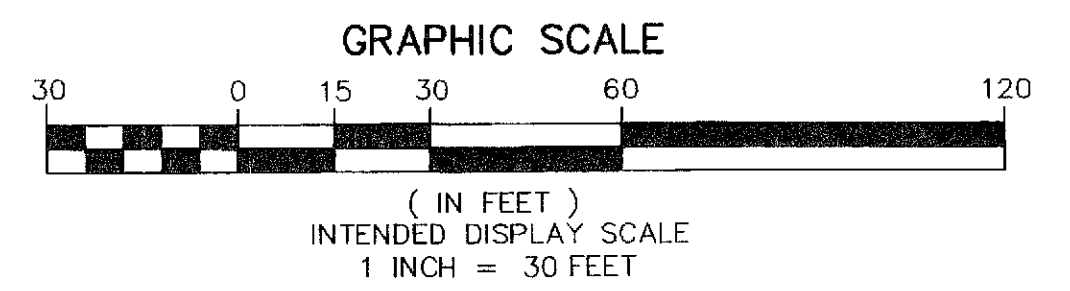
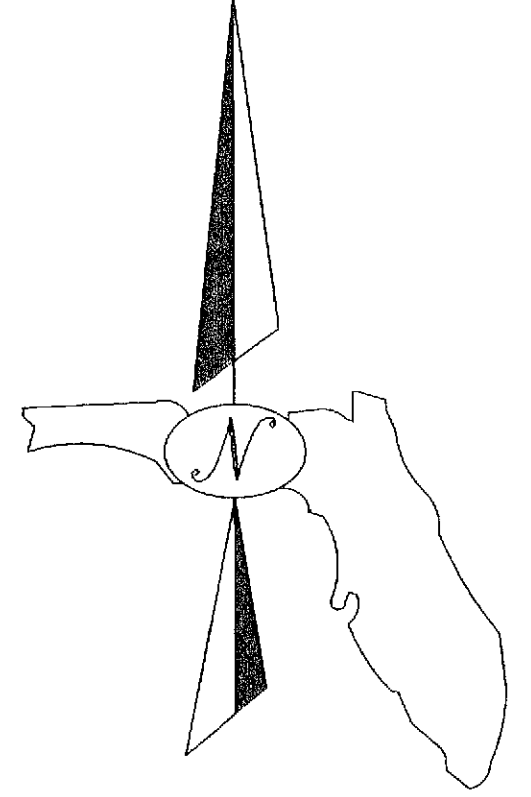
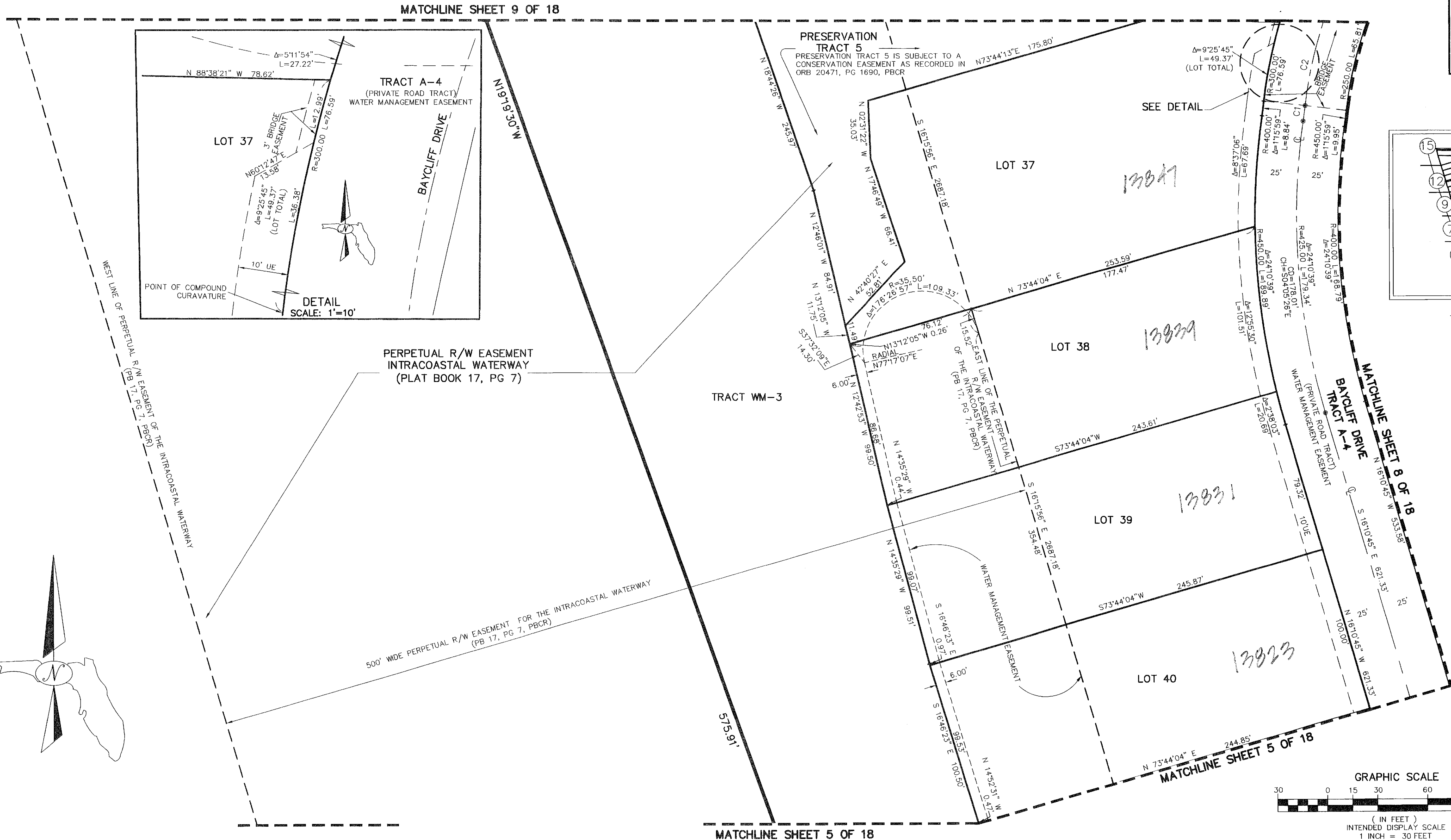
SHARON R. BOCK  
 CLERK AND COMPTROLLER

BY: \_\_\_\_\_  
 DEPUTY CLERK

**SHEET 7 OF 18**



SHEET INDEX  
 NOT TO SCALE



NOTE:  
 PRESERVATION TRACTS 1, 2, 3, 4, 5 AND 6 AS SHOWN HEREON, ARE HEREBY DEDICATED TO NORTHERN PALM BEACH COUNTY IMPROVEMENT DISTRICT (NPBCID), ITS SUCCESSORS AND ASSIGNS, FOR CONSERVATION AREAS AND IS THE PERPETUAL MAINTENANCE OBLIGATION OF SAID NPBCID, ITS SUCCESSORS AND ASSIGNS, WITHOUT RECOURSE TO PALM BEACH COUNTY, AS PER ARTICLE 14.C, OF THE PALM BEACH COUNTY LAND DEVELOPMENT CODE, THE TRACTS ARE SUBJECT TO A CONSERVATION EASEMENT RECORDED IN OFFICIAL RECORDS BOOK 20471, PAGES 1690 THROUGH 1744 OF THE PUBLIC RECORDS OF PALM BEACH COUNTY, FLORIDA.

CURVE TABLE				
CURVE	RADIUS	CENTRAL ANGLE	CURVE LENGTH	CHORD BEARING/DISTANCE
C1	425.00'	1°15'59"	9.39'	N07°21'54"E 9.39'
C2	275.00'	14°37'38"	70.21'	S14°02'44"W 70.02'
C3	525.00'	6°36'05"	60.49'	S01°54'46"W 60.45'